

Road Map



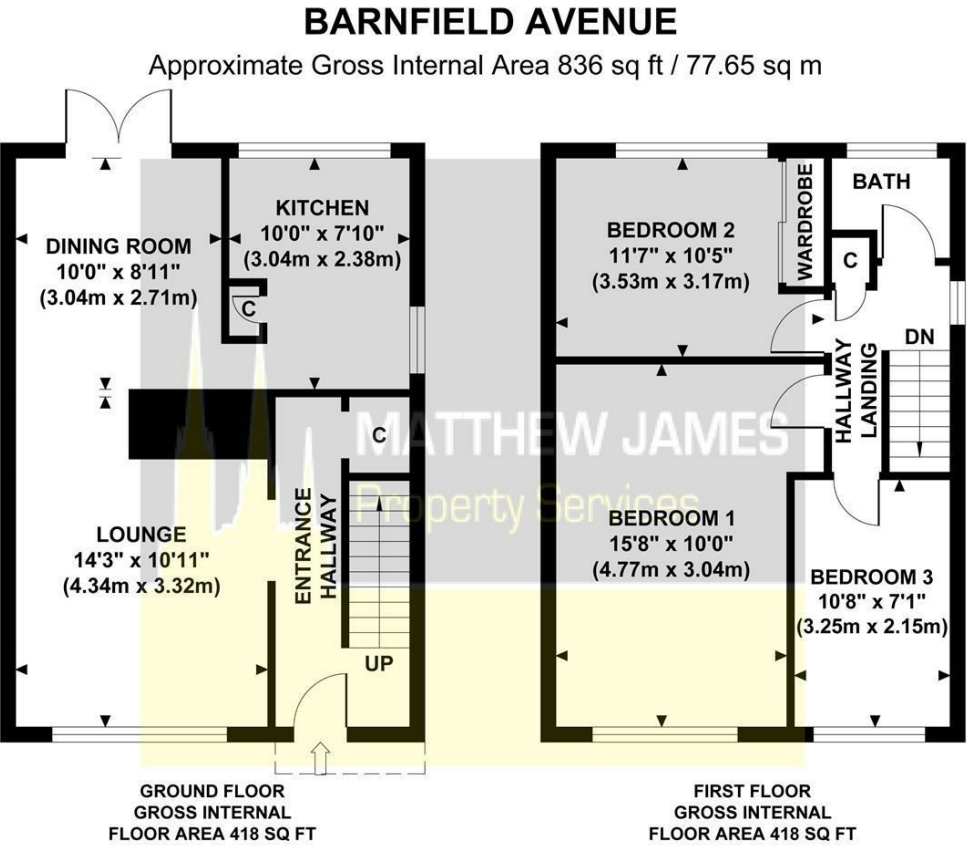
Hybrid Map



Terrain Map



Floor Plan



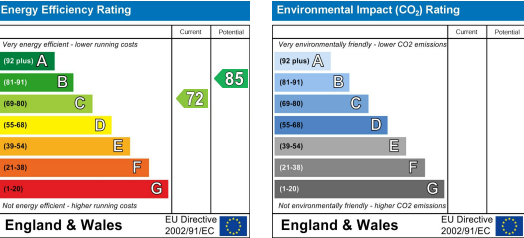
Although every attempt has been made to ensure accuracy, all measurements are approximate and no responsibility is taken for any error, omission, or mid-statement. This floor plan is for illustrative purposes only and not to scale. Measured in accordance to RICS standards.

Viewing

Please contact us on 02477 170170 if you wish to arrange a viewing appointment for this property or require further information.

These particulars, whilst believed to be accurate are set out as a general outline only for guidance and do not constitute any part of an offer or contract. Intending purchasers should not rely on them as statements of representation of fact, but must satisfy themselves by inspection or otherwise as to their accuracy. No person in this firms employment has the authority to make or give any representation or warranty in respect of the property.

Energy Efficiency Graph



**MATTHEW JAMES**  
Property Services



103 Barnfield Avenue

Allesley Village, Coventry CV5 9FX

£250,000



CONTACT INFORMATION

24a Warwick Row, Coventry CV1 1EY  
02477 170170

info@matthewjames.uk.com  
www.matthewjames.uk.com

Facebook  
Twitter



# 103 Barnfield Avenue

Allesley Village, Coventry CV5 9FX

£250,000



Front Garden

Entrance Hallway

Lounge

14'3 x 10'11

Dining Room

10'0 8'11

Kitchen

10'0 x 7'10

Hallway Landing

Bedroom One

15'8 x 10'0

Bedroom Two

11'7 x 10'5

Bedroom Three

10'8 x 7'1

Family Bathroom

7'8 x 5'6

Rear Garden

